

Directional Antenna

OLP-380M-350

Super Wideband Antenna up to 35GHz which covers Tetra/BOS, directional radio, miscellaneous satellite applications etc..

Every antenna goes through rigorous testing in our laboratories before dispatch and is equipped with a high quality GOLD COATING, a high-tech antenna-case (radome) which offers protection against mechanical damage and environmental influence, a top-quality integrated tripod connection and a SMA connector with twist protection.

All antennas include a complete high resolution (10MHz steps!) calibration data set with up to 533 calibration points (on CD). This offers the ability to make a very accurate EMC measurement with any Spectrum Analyzer.

All antennas are developed, individually produced and calibrated. This guarantees highest standard so that we can offer every customer a full 10 years warranty for all EMC antennas.



Features

- Includes exhaustive calibration data (on CD)
- Special designed radome for perfect antenna protection
- Gold coating for stable performance
- Wide bandwidth
- Coverage of various mobile radio frequency ranges
- Suitable for field-strength and EMC measurements due to high precision
- Compact and sturdy design
- Can be used in the lab and for open-field application

Applications

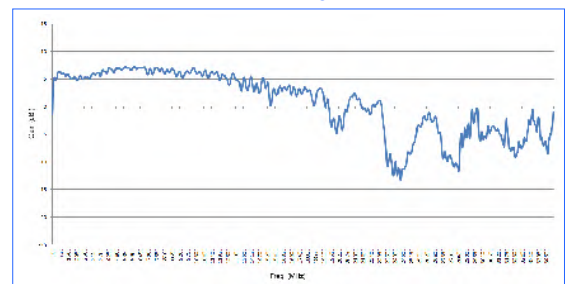
- ISM434, LTE800, ISM868, GSM900, GSM1800, GSM1900
- DECT UMTS WLAN Microwave Bluetooth
- WiFi LTE2.6 WiMAX 5GHz WLAN

Electrical Specifications

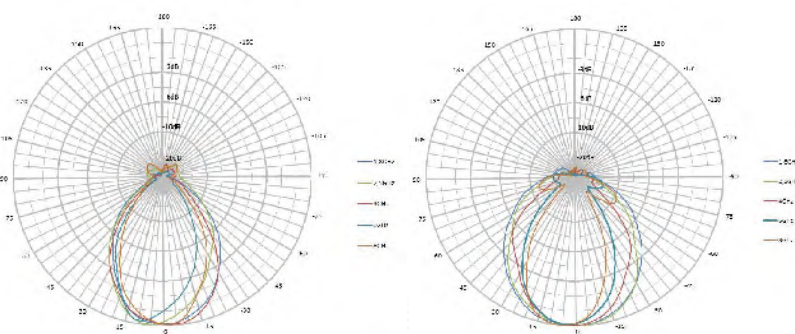
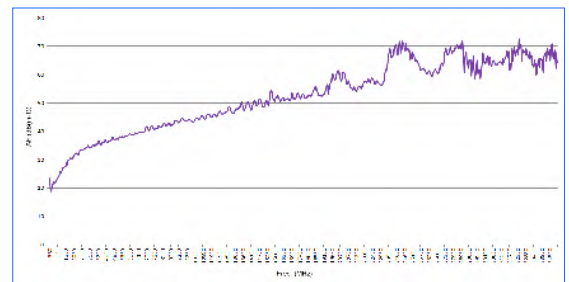
Frequency Range(GHz)	0.38-35
Nominal impedance	50 Ohm
VSWR	<1:2.5 (typ.)
Gain	5dBi (typ.)
RF connection	SMA (f) or N (see optional adapter)
Tripod connection	1/4"
Calibration points	693(10MHz-steps)
Dimensions (L/W/D)	590x360x30 mm
Weight	1000gr



Gain Diagram



Antenna Factor



Recommended accessories for Antennas

Aluminum tripod

Height adjustable, high stability. STRONGLY recommended for use with 40xx and 30xxx antennas! Max. height: 105cm.



SMA Cable (1-10m)

1m / 5m / 10m SMA-Cable

High quality special SMA cable for connecting any Antenna or EC-Antenna with various test equipment like our RF Spectrum-Analyzer. You can choose between 3 different cables:

- 1m standard SMA cable (RG316U)
- 5m LowLoss SMA cable (especially low damping)
- 10m LowLoss SMA cable (especially low damping)

All versions: SMA plug (male) / SMA plug (male)

Heavy multifunctional Pistol Grip (strongly recommended!)

Highly recommend for the usage of antennas. Quick and easy change of antenna polarization, perfect antenna handling.



SMA to N Adapter

SMA to N Adapter

This special high quality adapter allows operation of all EC-Antenna with any standard spectrum-analyzer with N connector. Also this adapter is needed to connect EC antennas to a SPECTRAN Spectrum Analyzer.

Especially massive, chrome-plated design. This adapter is usable for very high frequencies up to at least 18GHz. Physical dimensions are just 30x20mm. Nominal impedance 50 Ohms. Layout: SMA socket (female) / N plug (male).

Included in delivery

- OLP-380M-350 directional EC measurement antenna
- Typical calibration data with 211 calibration points (10MHz steps!) on CD
- Large aluminum carrying case with foam protection
- Pistol grip with mini tripod function
- Aaronia SMA tool set with over-torque protection

Options

- Option 520 (Transparent Antenna Version)
Special Version of this EC antenna with transparent radome. Not only for students or techies but for all who want to have a look at the inner workings of the antenna.