



OLB-137-20
5.85-8.20GHz Standard Gain Horn Antenna

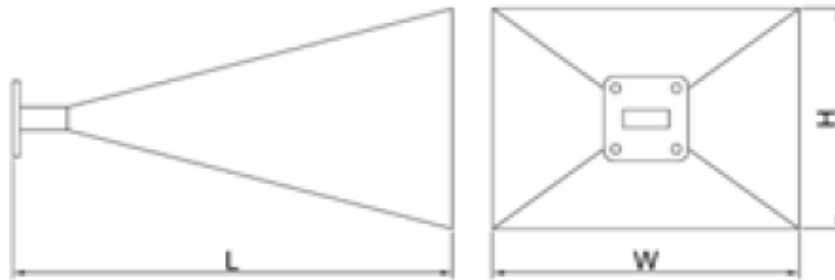
1/7

一、Description

Frequency Range(GHz)	5.85 - 8.20
Gain(dB)	20Typ.
3dB Beamwidth(deg)	18 Typ.
Waveguide	WR137
Material	Al
Output	A Type: FDP70 C Type: N-F or SMA-F
Size(mm) W x H x L	A Type: 197x153x290 C Type: 197x153x338
Net Weight(Kg)	A Type: 0.6 Around C Type: 0.7 Around

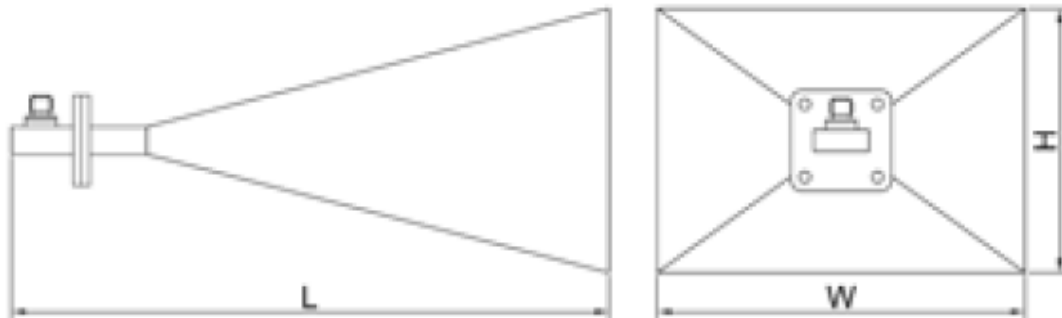
二、Dimension(mm)

A Type



W x H x L: 197x153x290

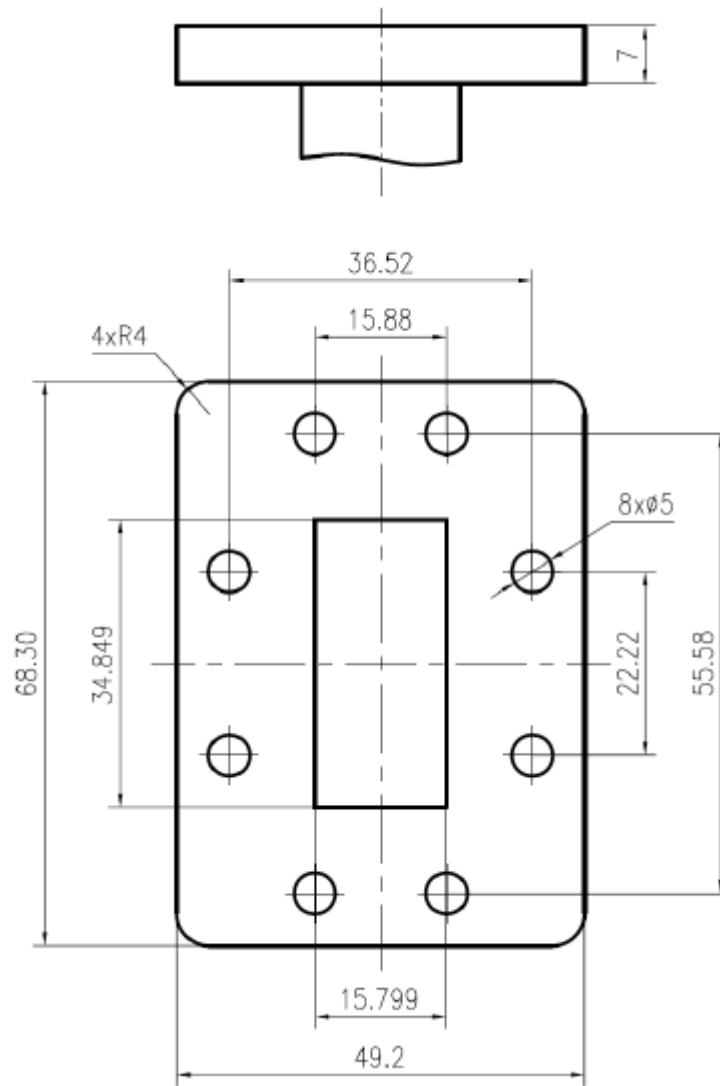
C Type



W x H x L: 197x153x338

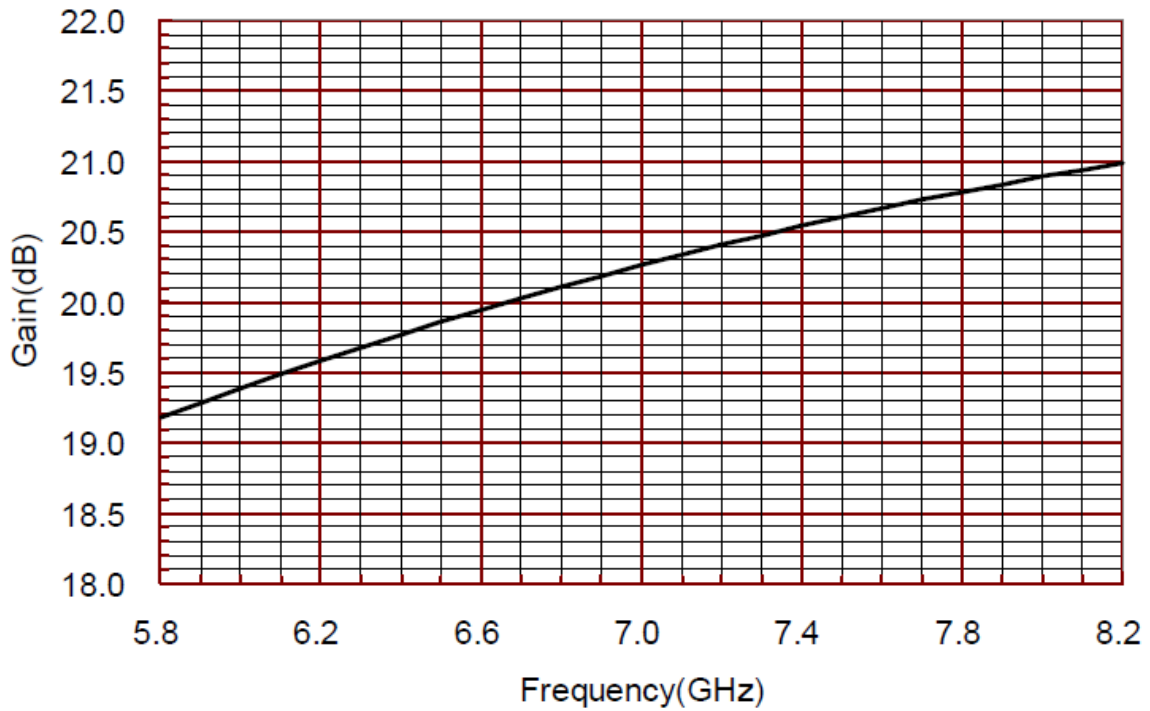
三、Flange Drawing(mm)

OLB-137-20
5.85-8.20GHz Standard Gain Horn Antenna

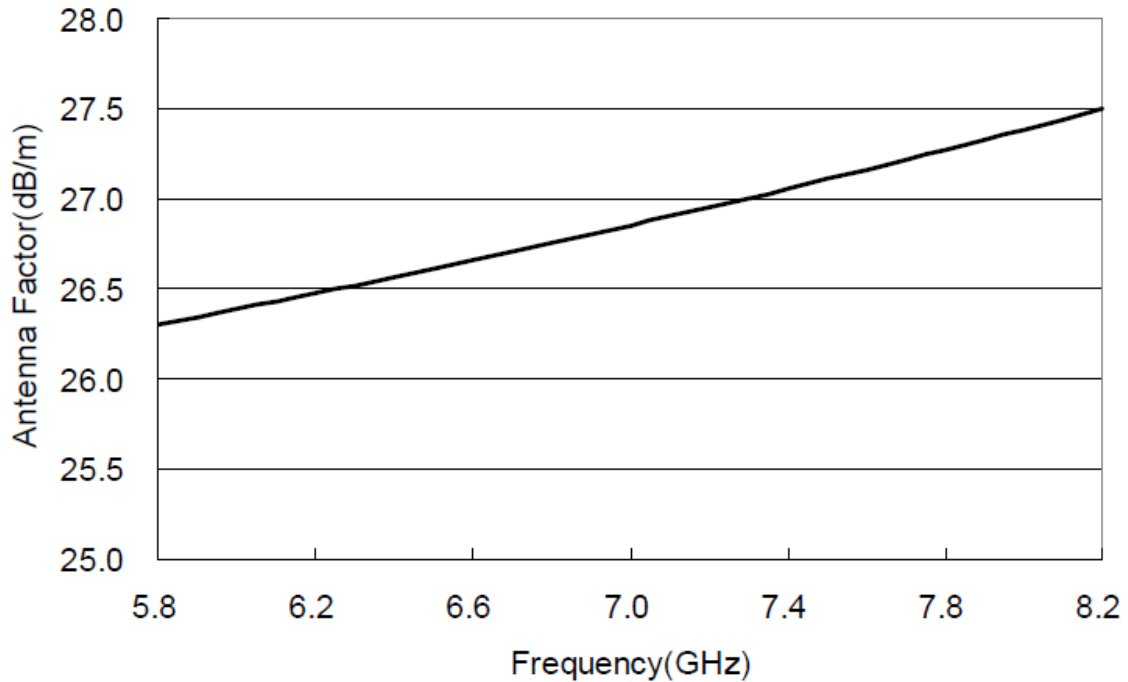


四、Test Result

1、Gain&Frequency



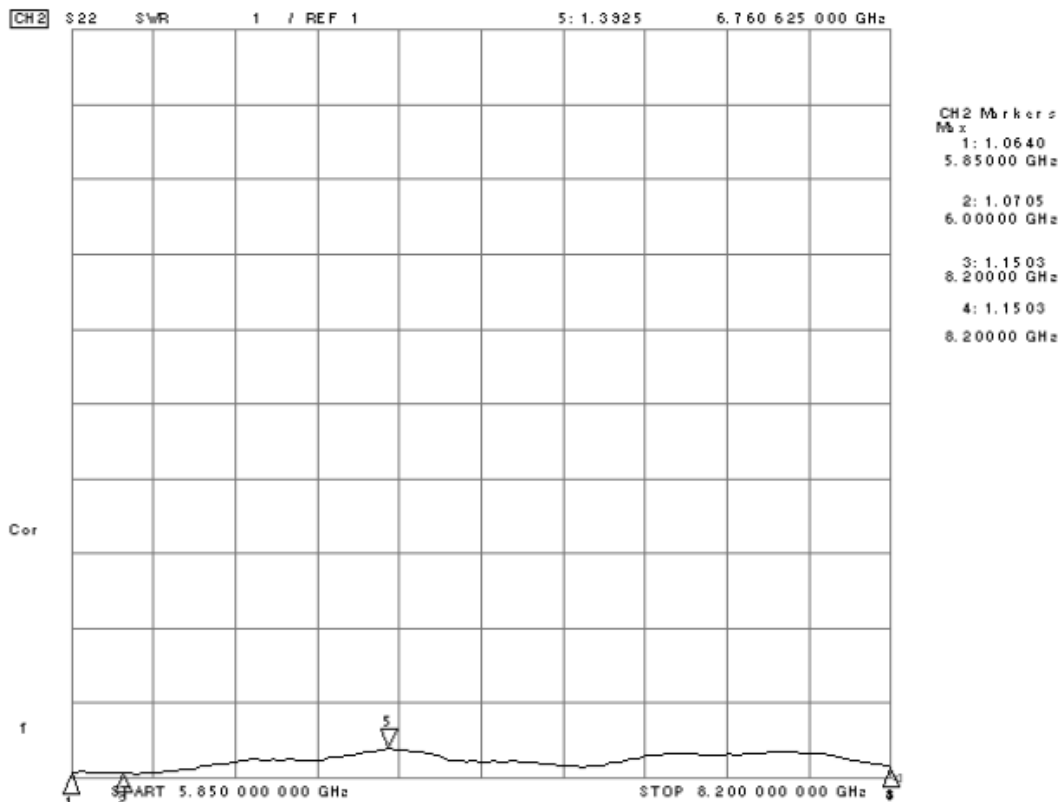
2、Antenna Factor



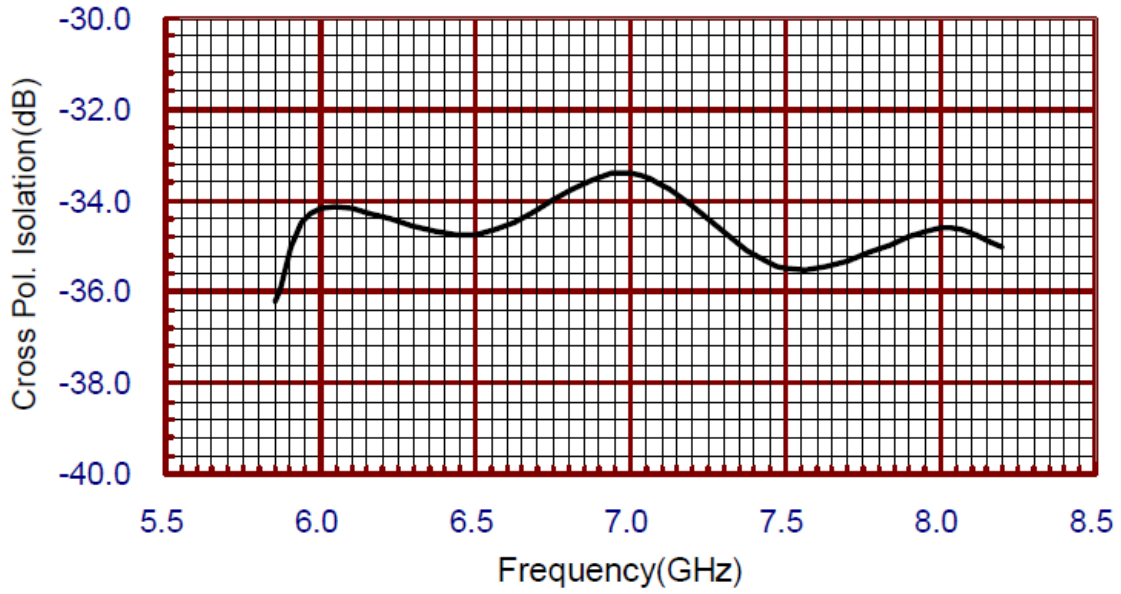
Frequency (GHz)	Gain (dB)	Antenna Factor (dB/m)
5.8	19.18	26.30
5.9	19.28	26.35
6.0	19.39	26.39
6.1	19.49	26.43
6.2	19.58	26.47
6.3	19.68	26.52
6.4	19.77	26.56
6.5	19.86	26.61
6.6	19.94	26.66
6.7	20.03	26.70
6.8	20.11	26.75
6.9	20.19	26.80
7.0	20.26	26.85

Frequency (GHz)	Gain (dB)	Antenna Factor (dB/m)
7.1	20.33	26.90
7.2	20.41	26.95
7.3	20.47	27.00
7.4	20.54	27.06
7.5	20.60	27.11
7.6	20.66	27.16
7.7	20.72	27.22
7.8	20.78	27.27
7.9	20.84	27.33
8.0	20.89	27.38
8.1	20.94	27.44
8.2	20.99	27.50

3、VSWR



4、Cross Polarization Isolation



5、Pattern

